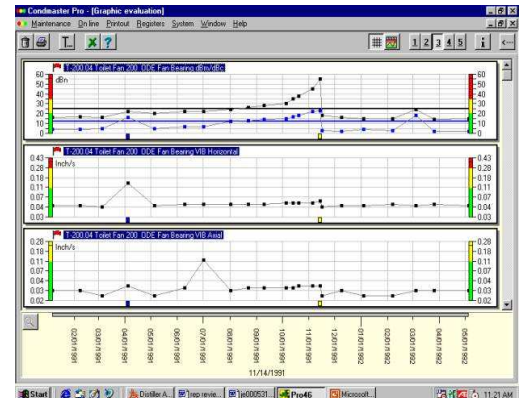
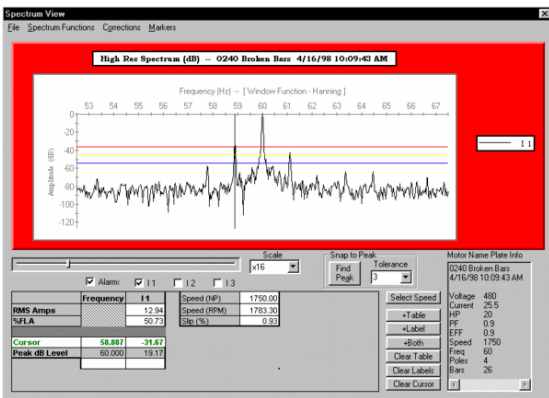
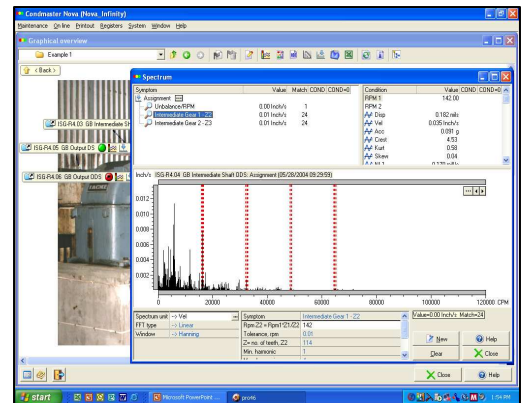


Mohler Technology Predictive Maintenance Services offers the Technology to give you the answers you need, for all industries and all applications.

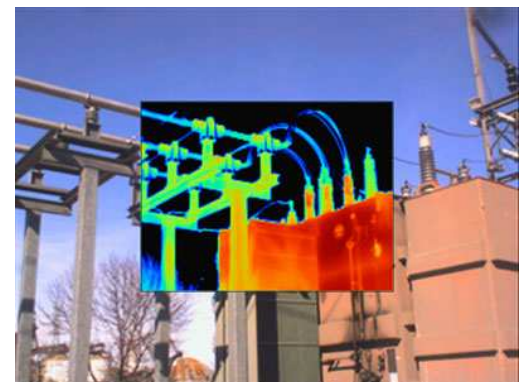
Machinery Condition Monitoring — Predictive Trending — Services & Solutions

Available Services:

- Vibration Analysis
- Bearing and Lubrication Monitoring
- Non-Energized Motor/Circuit Testing
- Energized Motor/Circuit Testing
- Current Signature Analysis
- Infra-Red Thermography
- Oil Sampling & Analysis
- On-Site Balancing
- On-Site Laser Alignment



Test Date	04/16/1998	04/16/1998	04/16/1998	04/16/1998	04/16/1998
Test Time	01:48:32 PM	02:53:07 PM	03:06:50 PM	03:29:26 PM	04:06:40 PM
Frequency	1200	1200	1200	1200	1200
Mohm Ph 1 to Gnd	0.0	0.0	0.0	0.0	>2000
Corrected Mohm	0.0	0.0	0.0	0.0	OVR
pF Ph 1 to Gnd	15000	15000	14750	14500	8000
ohm Ph 1 to 2	0.50900	1.18500	0.50050	0.53200	0.50800
ohm Ph 1 to 3	0.50250	0.50000	0.49450	0.62450	0.60850
ohm Ph 2 to 3	0.50400	1.18900	0.49450	0.52400	0.51250
mH Ph 1 to 2	10.900	10.900	10.620	10.730	10.680
mH Ph 1 to 3	10.820	10.790	10.470	10.660	10.860
mH Ph 2 to 3	10.670	10.670	9.935	10.750	10.720
Avg. Inductance	10.797	10.787	10.342	10.713	10.753
% Res. Imbalance	0.76	47.64	0.81	11.48	12.06
% Ind. Imbalance	1.17	1.08	3.93	0.50	0.99
\$ Power Loss	4.48	473.06	4.14	69.40	69.40
Condition Code					Not Assigned
Test Location	N/A	N/A	N/A	N/A	N/A



FOR SCHEDULING/INQUIRES PLEASE CONTACT SCOTT MOHLER (812) 751-5207
FAX (812) 897-2686

Mohler Technology, Inc.
2355 Eby Road
Boonville, Indiana 47601
(812) 897-2900 or (800) 258-5258

ISO 9001:2000
BSI REGISTERED
ANAB ACCREDITED
FM 37184