



Mohler Technology, Inc.  
Boonville, Indiana

*Knowledge, Experience and Commitment to Quality...*



Mohler Technology is one of the largest and most experienced industrial rotating apparatus service providers in the United States. Our facility includes over 52,000 square feet of industrial service and manufacturing space. With over 50 years of experience and a knowledgeable staff with a commitment to quality service, Mohler should be your choice for electric motor service and products.

Mohler Technology is approved and certified to perform UL Listing repairs, MSHA repairs and explosion testing, and is a longstanding member of the Electrical Apparatus Service Association.

Mohler is an SKF Certified  
Rebuilder of Electric Motors.



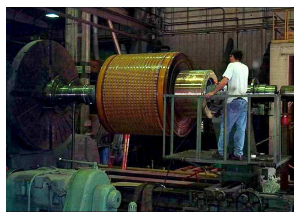
### Rotating Apparatus Repair

#### Electric Motor Services

- Motors from fractional to 200,000 HP
- AC/DC, wound rotor and synchronous
- In-shop reconditioning, repair, rebuild, load testing, and redesign
- On-site testing, repair and rewinding
- On-site dynamic balancing and laser alignment
- Turn-key (removal, repair, reinstallation)

#### Mechanical Services

- Centrifugal pump repair
- Gearbox repair
- Blower repair
- Complete machine shop services



### Predictive Maintenance Services

#### Electric Motor Testing and Trending

- Motor Circuit Evaluation (off-line)
- Current Signature Analysis (on-line)

#### Vibration Analysis

- Vibration data collection and analysis

#### Bearing Analysis

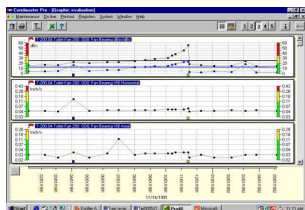
- Shock Pulse Method bearing analysis

#### Infra-Red Thermography

- Thermographic imaging and reporting

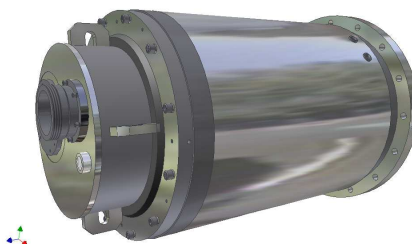
#### Oil Sampling

- Lubrication sample collection and analysis



### Longwall Mining Motor Manufacturing

- Manufacturing mining motors for twenty-two years
- Built the first Armored Face Conveyor (AFC) motors in 1988
- Over 750 AFC motors built to date, 190 different models



### Apparatus Sales

New and used electric motors, AC/DC drives & starters, solid-state excitation equipment, load-breaking plugs & receptacles, couplings, reducers & gearmotors, bearing isolators, bearing lubrication monitoring equipment, partial discharge monitoring equipment, motor accessories.

#### Manufacturers Represented:

Baldor

Benshaw

Eaton InsulGard

Electra Gear

Foote-Jones

Goodrich Rome

Inpro Seal

Leeson

Mohler Epoxy Seal

Renold (Ajax)

Reuland

SKF Microlog

SMC Electrical Products

TECO-Westinghouse

UVLM Ultra-Lube



### Quality System

- Provide products and services that meet the expressed expectations of our customers
- Dedicated to continually improve our products and processes
- Control our quality system by adhering to the requirements of the ISO 9001:2008 Quality Management System Standard

**Mohler Technology, Inc.**  
2355 Eby Road  
Boonville, Indiana 47601  
(812) 897-2900 or (800) 258-5258



Mohler Technology offers complete repair capabilities from basic maintenance to total rebuilding. From our single facility located in Boonville, Indiana we have repaired equipment for wide variety of industrial customers from coast-to-coast.

### Location

Mohler facilities are located in Boonville, Indiana in close proximity to Interstate 64, all within 20 miles of Evansville, Indiana.

### Motor / Winding Shop

#### Major equipment includes:

- 3 dynamic balancing machines, to 35,000 lbs.
- high potential test center (AC 15 kV and DC 60 kV)
- surge testers, including the Baker PP30
- EL-CID core loss tester
- 2 VPI systems to 10' diameter
- 10' water immersion test tank
- burn-off ovens
- high-pressure water winding removal system
- 3 dynamometers for load testing to 2000 HP
- 3 bake ovens
- 3 winding machines, including Samatic auto winder
- banding lathe / CAM tension control
- computerized instrumentation for sound and vibration
- laser alignment systems
- Mart Hurricane washer for parts cleaning to 6'

### Machine Shop

#### Major equipment includes:

- engine lathes to 140 in. dia. / 25 ft. centers
- horizontal boring machine
- vertical boring and turning lathes
- vertical and horizontal hydraulic presses to 25 tons
- ultrasonic tester
- commutator undercutter to 60" dia.
- radial arm drill
- milling machines
- vibratory stress relief unit
- metalizing equipment

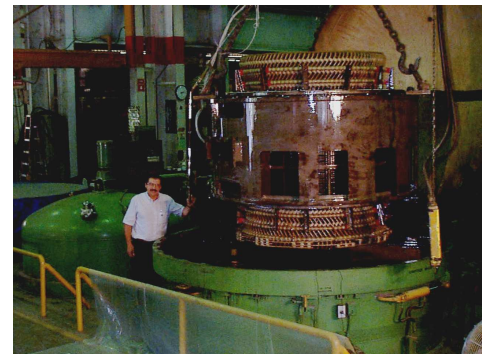
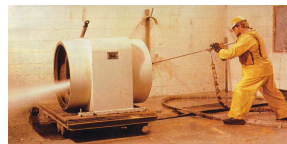
### Coil Shop

#### Major equipment includes:

- coil spreaders for formed coil manufacturing
- 2 winding machines
- refrigerated storage
- automated cutter/stripper

### Facility

Mohler has 52,000 square feet of modern industrial work space featuring eight overhead bridge cranes with lifting capacity of 30 tons, 28' hook height.



**Mohler Technology, Inc.**  
2355 Eby Road  
Boonville, Indiana 47601  
(812) 897-2900 or (800) 258-5258



Mohler Technology offers a large selection of new motors, drives, gearing and other motor related parts, accessories and products. Mohler Technology can provide quotations for electric motors manufactured by any manufacturer.

Distributor Products		
<b>Electric Motors – Drives - Starters</b> <b>WARRANTY SERVICE CENTER</b>  	<b>Electric Motors – Drives - Starters</b> <b>WARRANTY SERVICE CENTER</b>  	
<b>Electric Motors for Long-Wall Mining</b>  	<b>Electric Motors - Gear Motors - Drives</b>  	
<b>Electric Motors - Gear Motors</b>  	<b>Soft Start</b>  	
<b>Connectors &amp; Receptacles</b> <ul style="list-style-type: none"> <li>• SMC Electrical Products</li> </ul>	<b>Bearing Isolators</b> <ul style="list-style-type: none"> <li>• Inpro Seal</li> </ul>	<b>Lubrication Monitoring</b> <ul style="list-style-type: none"> <li>• UVLM Ultra-Lube</li> </ul>
<b>Gearing</b> <ul style="list-style-type: none"> <li>• Electra Gear</li> <li>• Foote-Jones</li> </ul>	<b>Partial Discharge Monitoring</b> <ul style="list-style-type: none"> <li>• EATON InsulGuard</li> </ul>	<b>Couplings</b> <ul style="list-style-type: none"> <li>• Renold (Ajax)</li> <li>• Goodrich Rome</li> </ul>
	<b>Vibration Data Collection</b> <ul style="list-style-type: none"> <li>• SKF Microlog</li> </ul>	

FOR ORDERS/INQUIRES PLEASE CONTACT A MEMBER OF THE MOHLER INSIDE SALES STAFF  
**1-800-258-5258**

**Linda Warner (812) 751-5204**

[linda.warner@mohler.com](mailto:linda.warner@mohler.com)

**FAX (812) 897-2686**

**Bob Wefel (812) 751-5206**

[robert.wefel@mohler.com](mailto:robert.wefel@mohler.com)



**Mohler Technology, Inc.**  
 2355 Eby Road  
 Boonville, Indiana 47601  
 (812) 897-2900 or (800) 258-5258





## Contact Information

Mohler Technology operates 24 hours a day, 7 days a week, 365 days a year. Our staff is here to help you with all your needs whether planned or during an emergency. Call us anytime for service and product sales.

**Toll Free      800-258-5258**  
**Local         812-897-2900**  
**Fax            812-897-2686**

### Shop Repair & On-Site Services

**John Vote—Customer Service Manager**  
(812) 751-5219 desk

**Charlie Becker—Shop Foreman**  
(812) 751-5209 desk  
(812) 217-8312 cell

### Apparatus Sales

**Linda Warner—Sales Representative**  
(812) 751-5204 desk

**Bob Wefel—Sales Administrator**  
(812) 751-5206

### Predictive Maintenance Services

**Scott Mohler—President**  
(812) 751-5207 desk  
(812) 455-4206 cell

### HOURS OF OPERATION

**NORMAL BUSINESS HOURS**  
**Monday—Friday 7:00 AM to 4:30 PM**

### EMERGENCY CALLS

**EMERGENCY/AFTERHOURS/WEEKENDS CALL**  
**TOLL FREE 800-258-5258 or LOCAL 812-897-2900**

**\*IF FOR ANY REASON EITHER OF THE ABOVE  
NUMBERS IS NOT ANSWERED PLEASE USE  
THE FOLLOWING CELL PHONE NUMBERS:**

**STEVE MOHLER    812-455-2518**  
**SCOTT MOHLER   812-455-4206**  
**CHARLIE BECKER   812-217-8312**

***Knowledge, Experience and Commitment to Quality...***  
***Mohler Technology***



**Mohler Technology, Inc.**  
2355 Eby Road  
Boonville, Indiana 47601  
(812) 897-2900 or (800) 258-5258



# MOHLER

## Quality System

### Mohler Technology - Quality Management System since 1997

QUALITY MANAGEMENT SYSTEM - ISO 9001:2008

#### Mohler Technology

*Holds Certificate No: **FM 37184***

*and operates a Quality Management System which complies with the requirements of ISO 9001:2008 for the following scope:*

Design and manufacture of electric motors for longwall mining and other special applications. Repair of electric motors and associated apparatus for medium to heavy industry. Predictive maintenance services and distributor sales.

USA SIC Code No. 7694 Electric apparatus repair/rewinding.

USA SIC Code No. 3621 Manufacturing of electric motors.

USA SIC Code No. 8711 Predictive maintenance services.

USA SIC Code No. 5063 Distributor sales of electrical apparatus.

Originally registered: **06/20/1997**  
Latest Issue: **03/20/2015**  
Expiry Date: **03/29/2018**



***Knowledge, Experience and Commitment to Quality...***  
***Mohler Technology***



**Mohler Technology, Inc.**  
2355 Eby Road  
Boonville, Indiana 47601  
(812) 897-2900 or (800) 258-5258